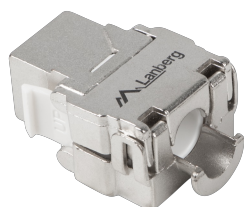
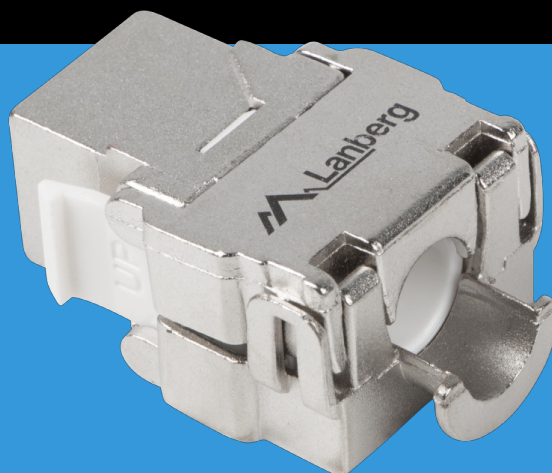


KSF6-2000

# KEYSTONE RJ45- >LSA KAT.6 FTP 180°



## PRODUCT FEATURES:

## PRODUCT SPECIFICATION:

Type	Module
Connectors	RJ-45
ICT category	Cat. 6
Shielding type	S/FTP
Tool-free installation	Yes
Case material	Metal
Connector material	Phosphor bronze
Colour	Silver
Life span of the socket	> , 750 cycles
AWG	22 - 26
PoE power supply type	PoE, PoE+, UPoE
Maximum voltage	57 V
Keystone port width	14,5 mm
Keystone port height	16,1 mm
Dimensions	41,5 x 14,6 x 26,6 mm
Environment temperature	from -10 up to 60 °C
Included Accessories	Cable ties